

PART OF THE S.E. 1/4 OF SEC 22, PART OF THE S.W. 1/4 OF SEC 23, PART OF THE N.W. 1/4 OF SEC 26,
PART OF THE N.E. 1/4 OF SEC 27 T.7N., R.1E., S.L.B. & M.

ELKHORN SUBDIVISION, PHASE 3

TAXING UNIT: 203

IN WEBER COUNTY

SCALE 1" = 80'

SEE PAGE 128

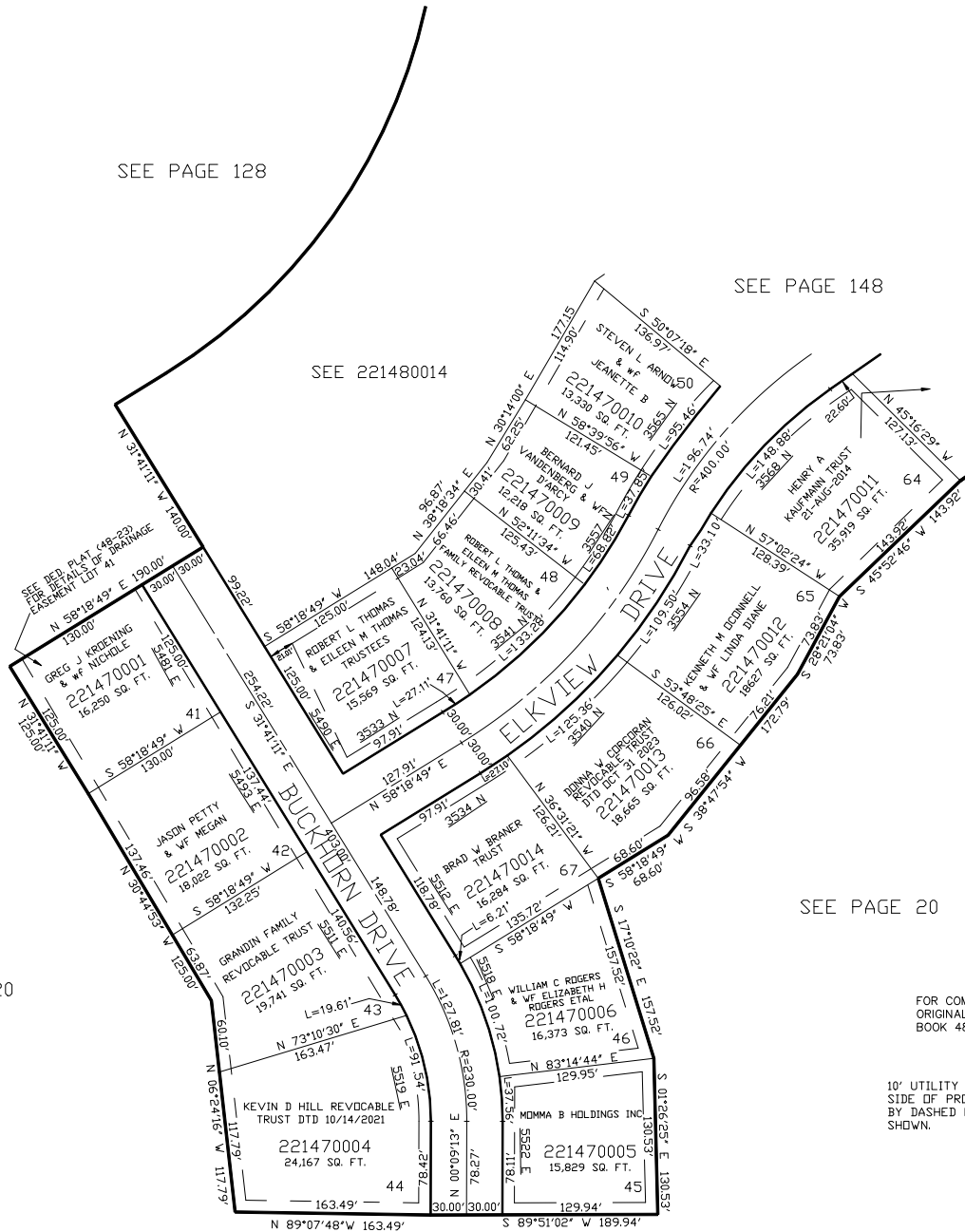
SEE PAGE 148

SEE PAGE 20

SEE PAGE 20

FOR COMPLETE ENG DATA SEE
ORIGINAL DEDICATION PLAT IN
BOOK 48, PAGE 23 OF RECORDS.

10' UTILITY & DRAINAGE EASEMENTS EACH
SIDE OF PROPERTY LINES AS INDICATED
BY DASHED LINES EXCEPT AS OTHERWISE
SHOWN.



SEE PAGE 20

FOR TAX PURPOSES ONLY